

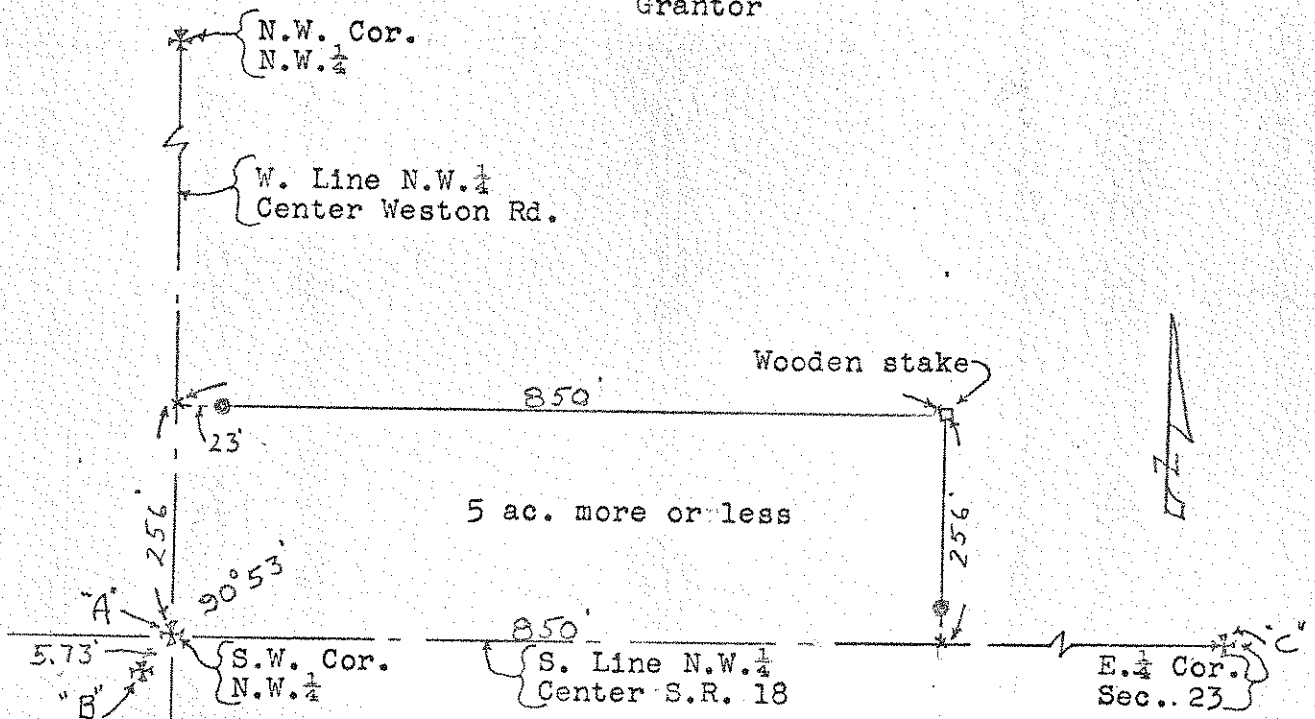
266  
JACKSON

ARROW CORP

ARROW CORP

ARROW CORP

SURVEY  
 in  
 S $\frac{1}{2}$ , N.W. $\frac{1}{4}$ , Sec..23, T3N-R9E  
 Jackson Twp.  
 Wood Co..O..  
 Walter Hennings  
 Grantor



Note; On this survey two points were found at the S.W. Cor. of the N.W. $\frac{1}{4}$ . State Highway notes call point "A" as being the true corner. In the event that at a future date point "B" be accepted as the corner the north line of parcel being surveyed shall remain as shown on this survey. The S.E. Cor. of the N.W. $\frac{1}{4}$  has been destroyed. On this survey the South Line of the N.W. $\frac{1}{4}$  was established by running from point "A" to point "B".

Control points found at points shown thus \*  
 Iron pipe set at points shown thus ●  
 Spikes set at points shown thus x

Surveyed by H. M. Mason  
 May 1967 Reg..Sur. 890

266  
JACKSON