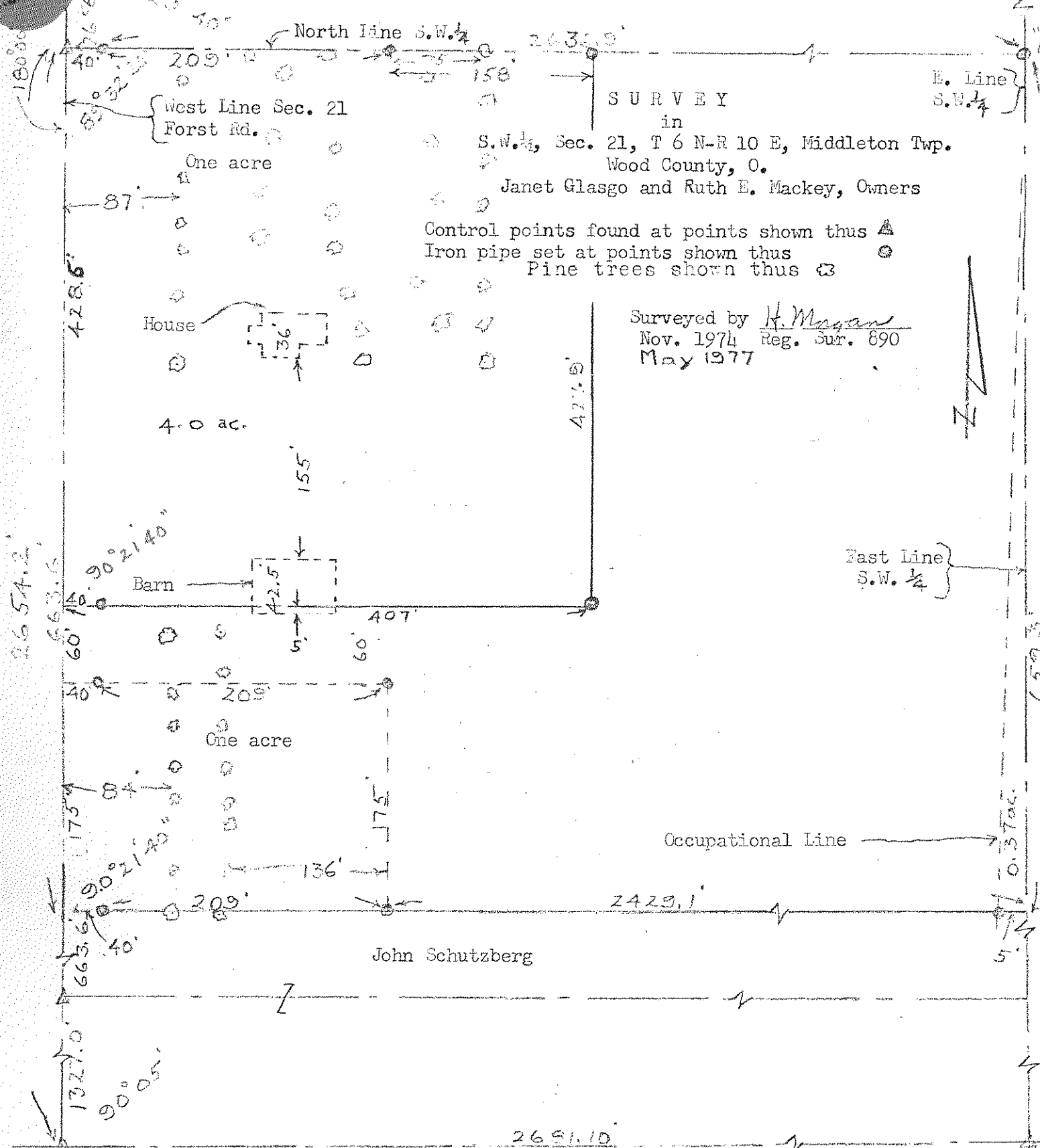


645
MIDDLETON

N. Line Sec. 21 King Rd. 2671.8'



SURVEY
in
S.W. 1/4, Sec. 21, T 6 N-R 10 E, Middleton Twp.
Wood County, O.
Janet Glasgo and Ruth E. Mackey, Owners

Control points found at points shown thus \triangle
Iron pipe set at points shown thus \odot
Pine trees shown thus \oplus

Surveyed by H. Magan
Nov. 1974 Reg. Sur. 890
May 1977



S. Line S.W. 1/4 State Route 582 2651.10'

645
MIDDLETON