

ORAVECZ & ASSOCIATES, LLC

SURVEYORS & ENGINEERS

474-6664

FAX 474-5059

WWW.ORAVECZASSOCIATES.COM

474-2405

5333 SECOR ROAD SUITE TWO TOLEDO, OHIO 43623

PART OF OUTLOT 151

CITY OF PERRYSBURG, WOOD COUNTY, OHIO

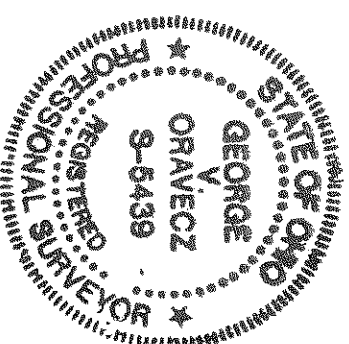
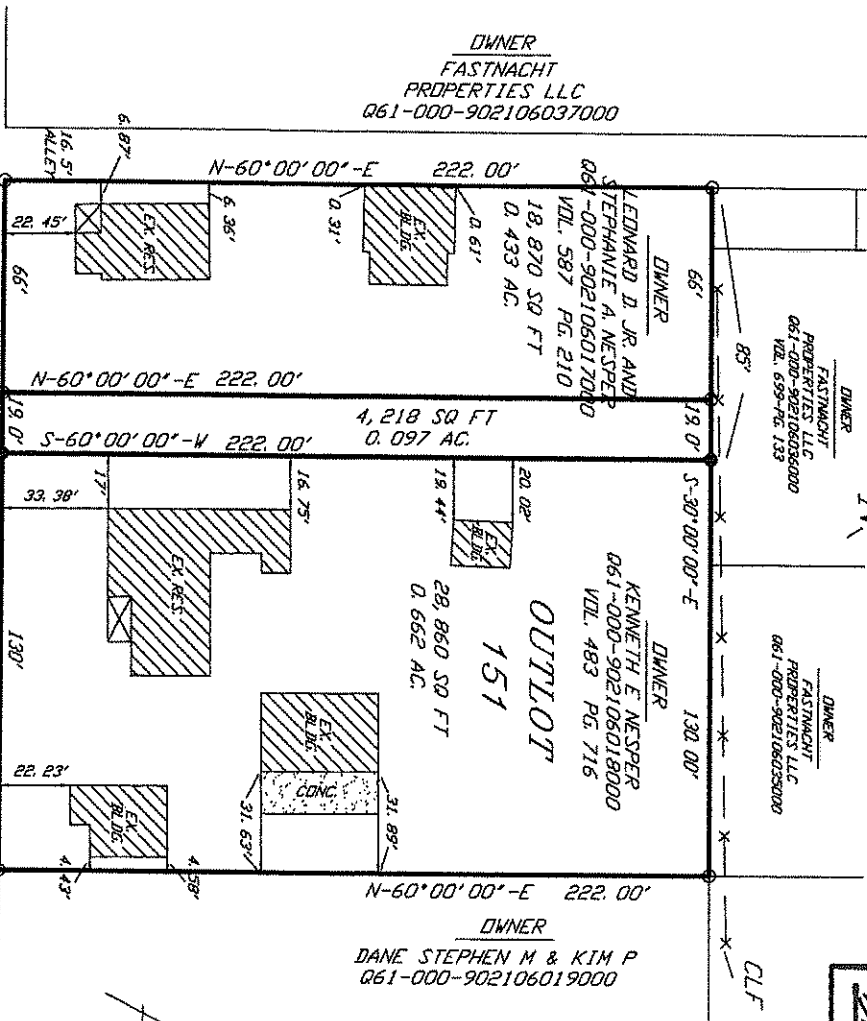
SURVEY REPORT

FOR

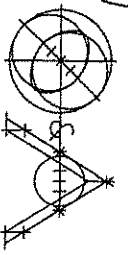
LEONARD & CHARLENE NESPER

APPROVED 9-14 20 15
 CITY OF PERRYSBURG
 PLANNING COMMISSION
 NO PLAT REQUIRED
 P&Z ADM.

- SCALE: 1" = 60'
- = FOUND 1/2" DIA. IRON ROD
 - = SET 5/8" IRON ROD W/CAP DRAVECZ #5439



George V. Oravec
 George V. Oravec Registered Surveyor No. 5439



George V. Oravec
 GEORGE V. ORAVECZ
 REG. SUR. NO. 5439
 ORDER NO. 23202
 DATE 5/11/2015

478
 B
 478

478
 B
 478