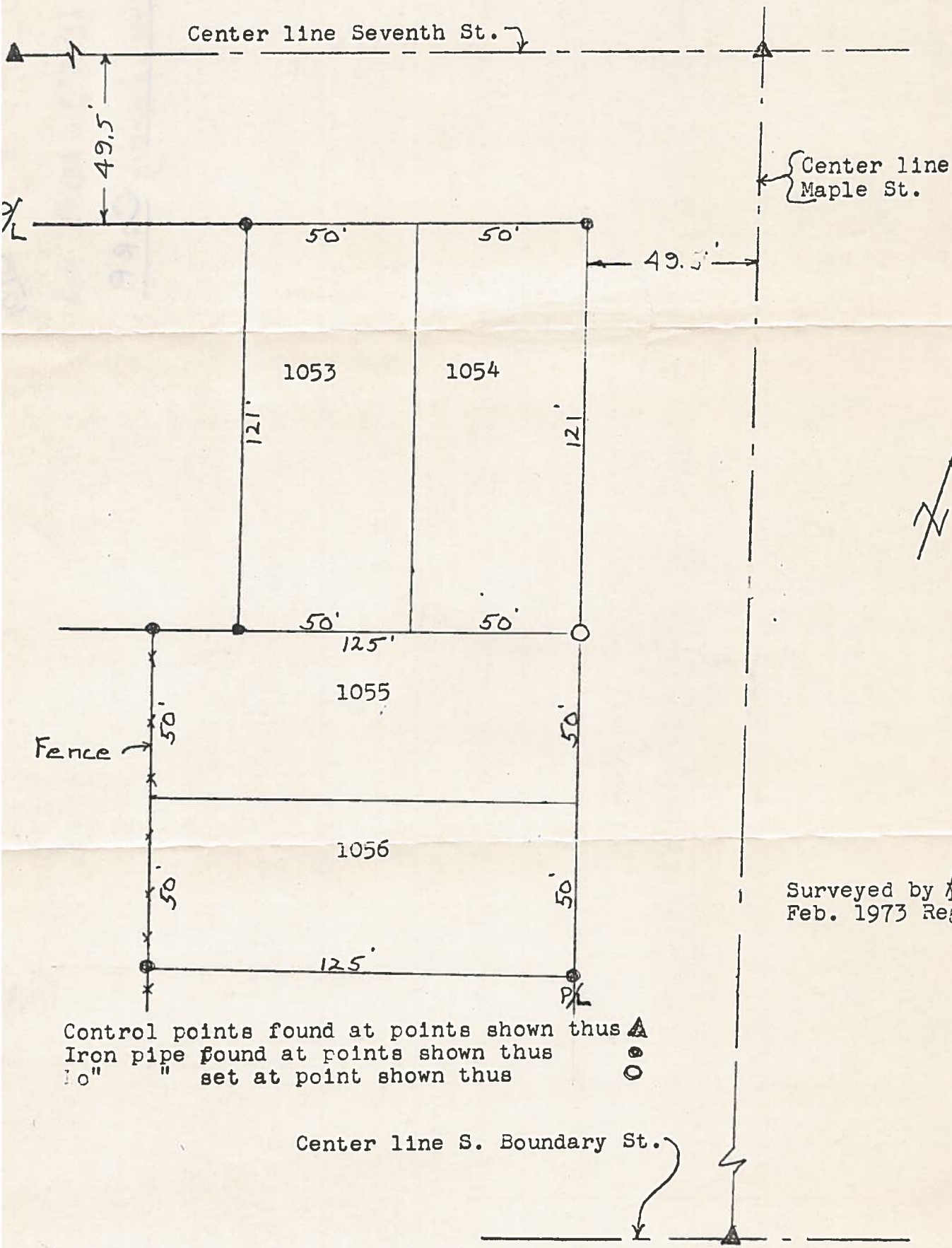


S U R V E Y
of

Lots 1053&1054, Perrysburg O. Louise Wagoner - Owner
" 1055&1056 " " Stanley J. Rudey "

PERRYSBURG
CORP
536



Surveyed by H. Morgan
Feb. 1973 Reg. Sur. 890

Control points found at points shown thus \blacktriangle
Iron pipe found at points shown thus \circ
10" " set at point shown thus \circ

PERRYSBURG
CORP
536