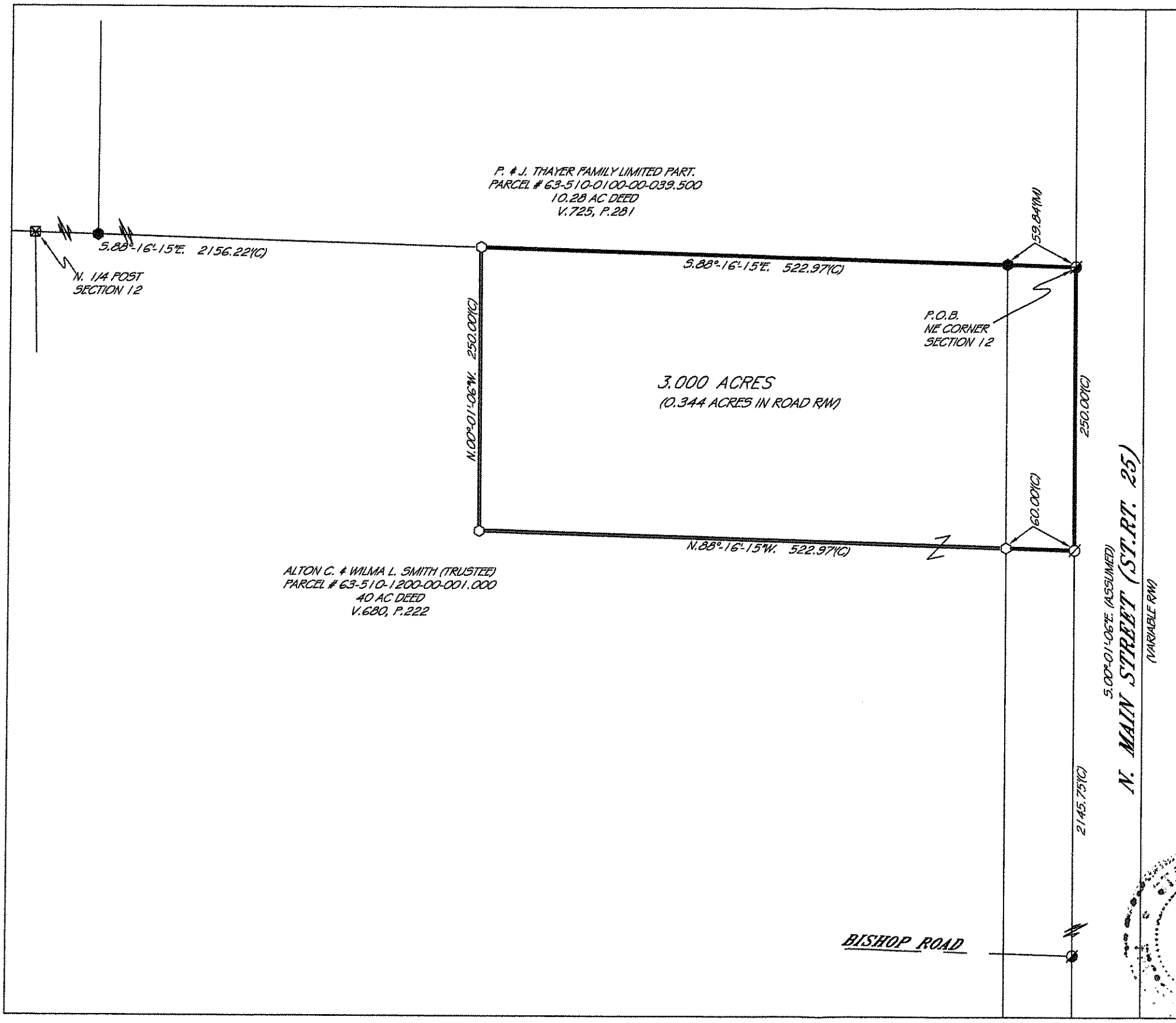
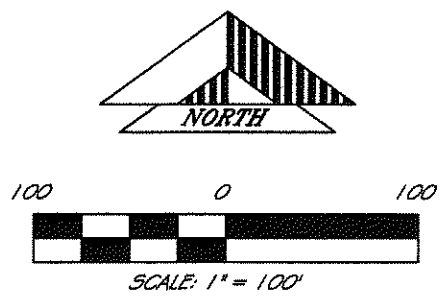


PLAIN
A
437



- LEGEND**
- ⊙ = MAG-NAIL SET
 - = NAIL FOUND
 - = 5/8" IRON PIN SET
 - = 5/8" IRON PIN FOUND
 - = IRON PIPE FOUND
 - ⊕ = RAILROAD SPIKE FOUND
 - ▲ = STONE FOUND
 - ⊠ = CONC. MONUMENT
 - (D) FOUND
 - (F) = FLAT
 - (C) = CALCULATED
 - (M) = MEASURED



PRIOR DEED REFERENCES:
VOL. 680, PG. 222

PRIOR SURVEY REFERENCES:

THIS PLAT IS OF AN ACTUAL SURVEY PERFORMED BY PERRY SURVEYING 6-16-11. A TITLE SEARCH WAS NOT PERFORMED ON THIS PARCEL TO DO THE FIELD WORK.

CRAIG C. PERRY
7839

CRAIG C. PERRY P.S. # 7839

PERRY SURVEYING LLC
"Outstanding In Our Field... And Yours!"

402 TIFFIN AVENUE
FINDLAY, OHIO 45840
PH: 419-423-3656 FAX: 419-423-6784

PLAT OF A SURVEY FOR
J. SMITH SITE
IN THE NE 1/4 OF
SECTION 12, T. 5N., R. 10E.,
PLAIN TOWNSHIP
WOOD COUNTY, OHIO

REVISIONS	DATE	BY
ACRES	02/21/13	CCP
FRONTAGE	12/13/13	CCP

SCALE 1" = 100'

DATE 6-17-2011

DWG BY CCP

JOB NUMBER
S-040-11

PLAIN
A
437