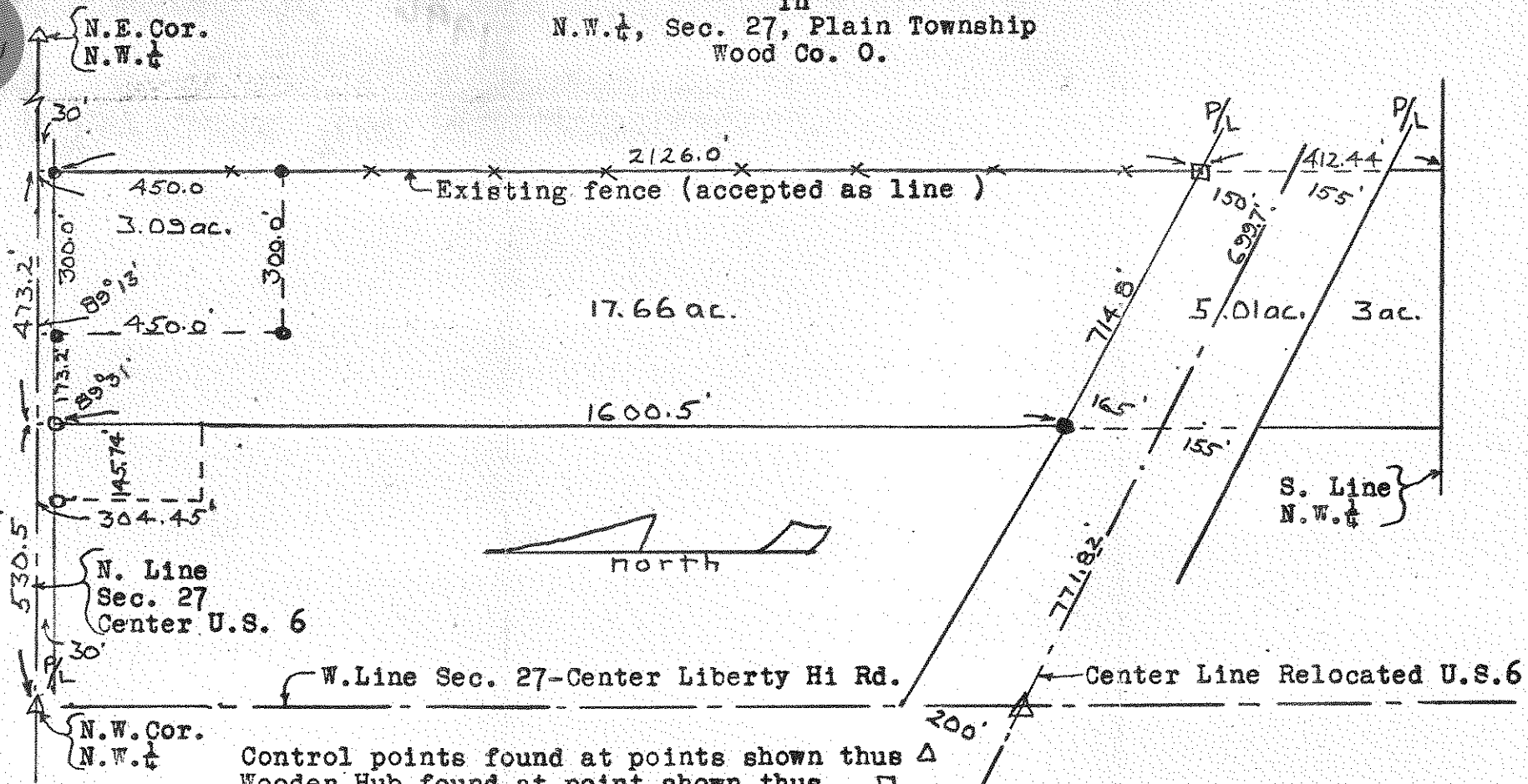


520
PLAW

SURVEY
in
N.W. 1/4, Sec. 27, Plain Township
Wood Co. O.



Control points found at points shown thus Δ
 Wooden Hub found at point shown thus \square
 Metal Markers found at points shown thus \circ
 Steel Markers set at points shown thus \bullet
 North end of this survey based on a survey by Dunipace made in 1937.
 South " " " " " " Ohio Dept. of Highway Plans.

Surveyed by H. Morgan
 Nov. 1969 Reg. Sur. 890

520
PLAW