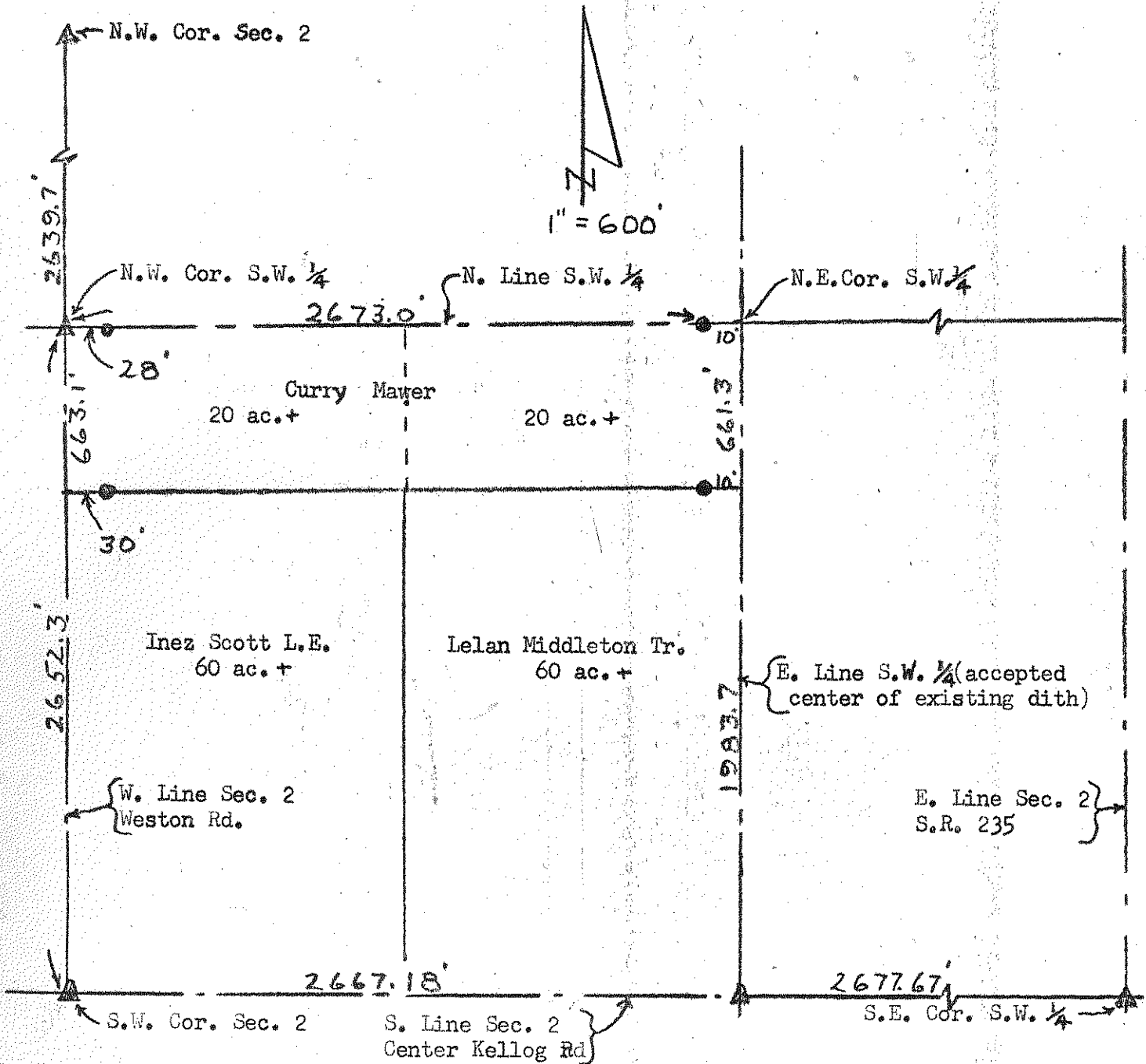


435
WASHINGTON

SURVEY
of
N. 1/4, S.W. 1/4, Sec. 2, T 5 N-R9 E, Washington Twp.
Wood Co. O.
Currey Mawer-Grantor

Control points found at points shown thus ▲
Iron pipe set at points shown thus ●



Note: N.E. Cor. of the S.W. 1/4 was established by accepting the center of the North and South ditch with the center of the ditch to the west.

Surveyed by H. Morgan
Feb. 1975 Reg. sur. 890

435
WASHINGTON