

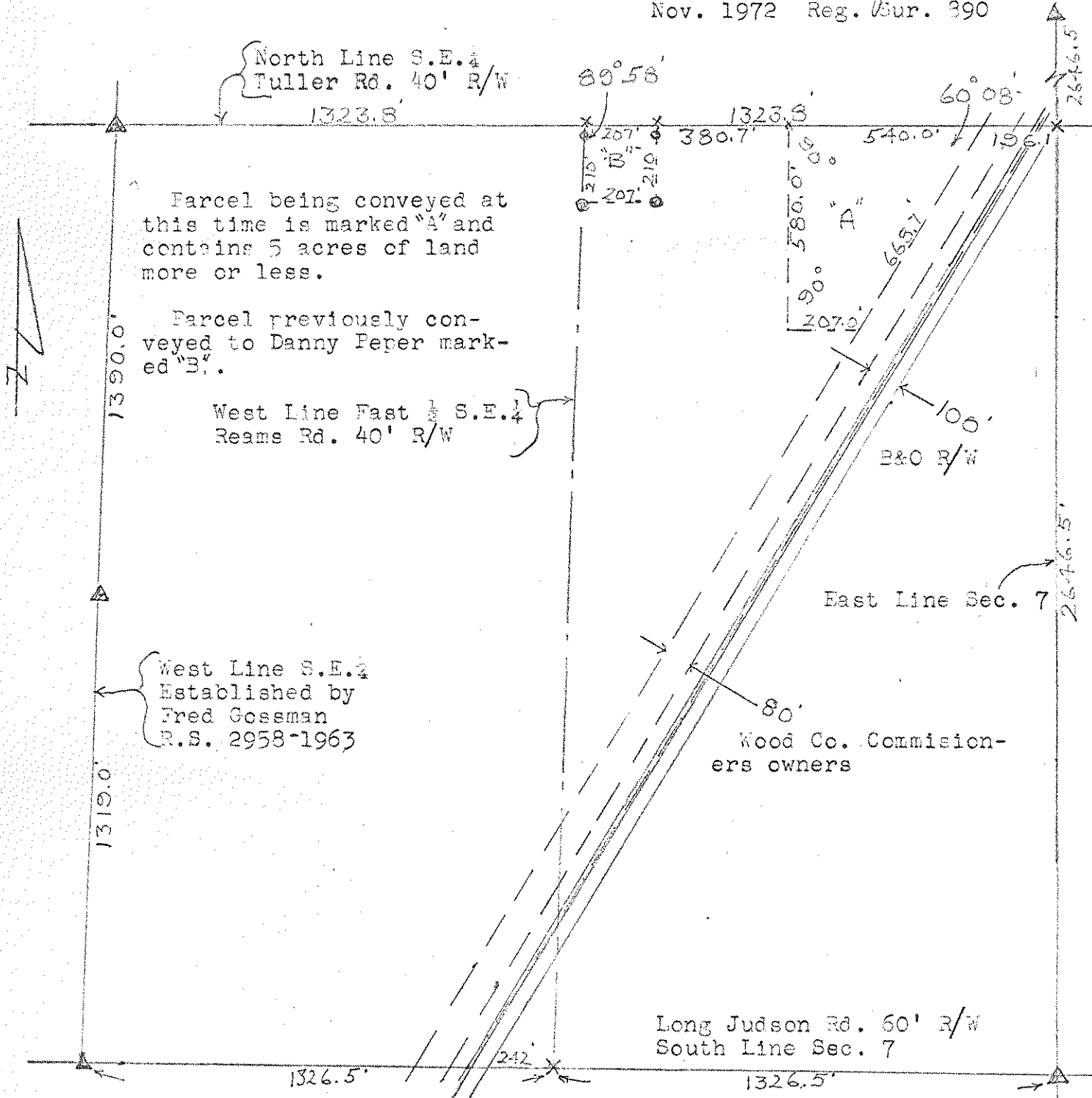
439  
WASHINGTON

SURVEY

in  
S.E. 1/4, Sec. 7, T 5 N-R 10 E, Washington Twp  
Wood Co. O.  
John Merlock Est.

Control points found at points shown thus  $\triangle$   
Iron pipe set at points shown thus  $\odot$   
F.K. Nails set at points shown thus  $\times$

Surveyed by H. Morgan  
Nov. 1972 Reg. Bur. 390



439  
WASHINGTON