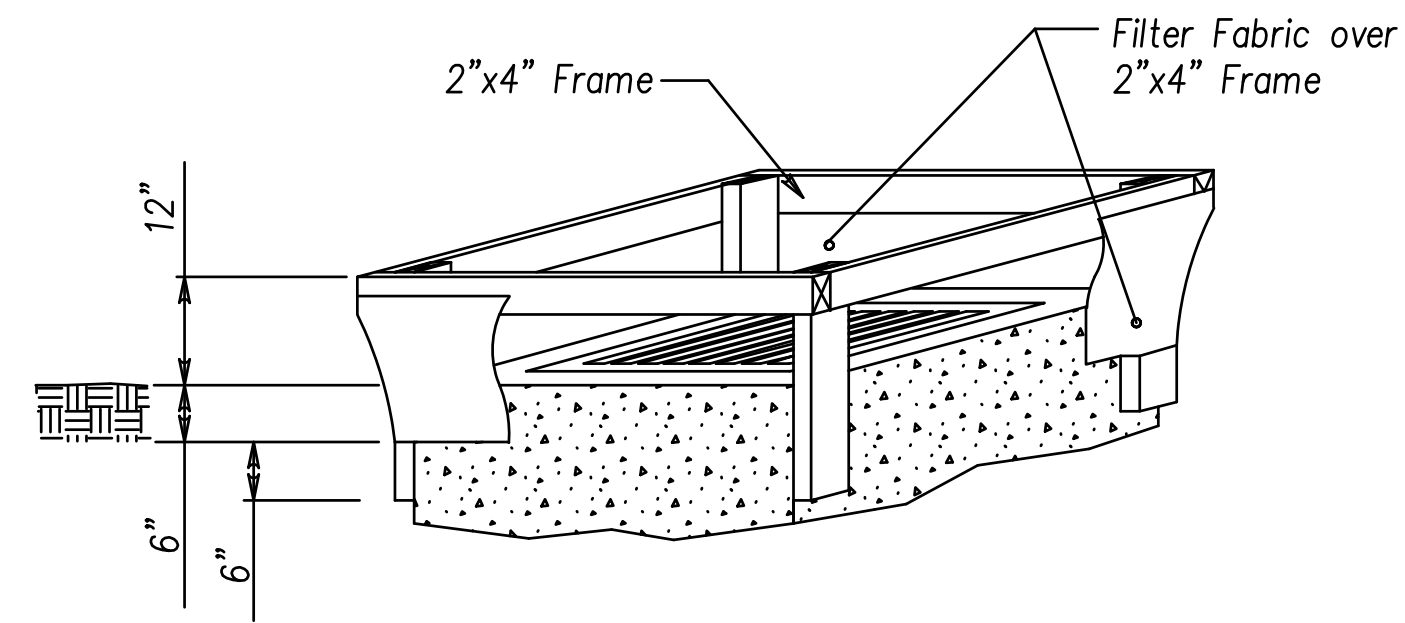


TEMPORARY INLET PROTECTION
FILTER FABRIC FENCE

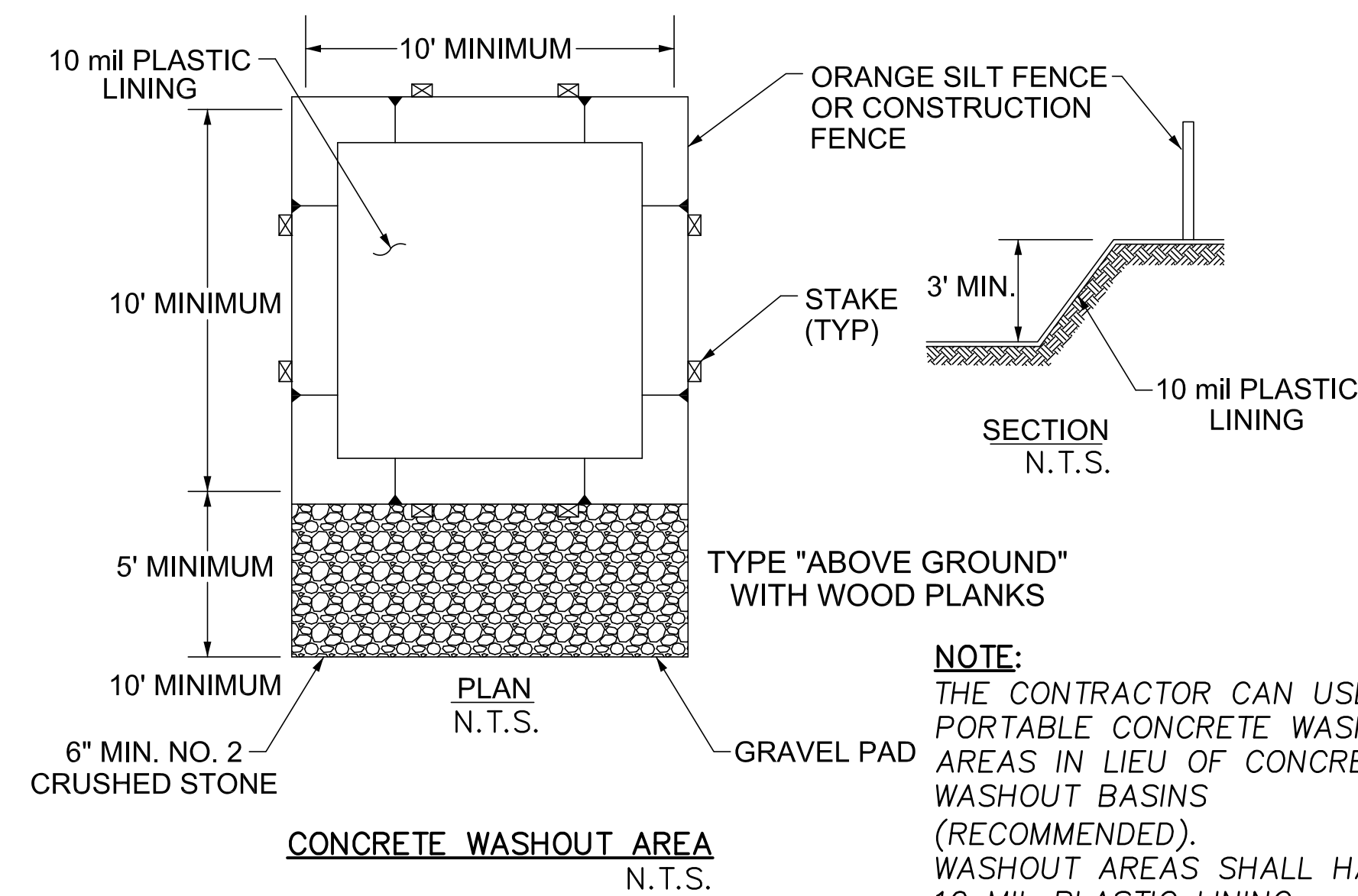


MATERIALS: Filter Fabric shall meet the requirements of CMS 712.09, Type C. The framing wood shall be construction grade 2"x4" lumber.

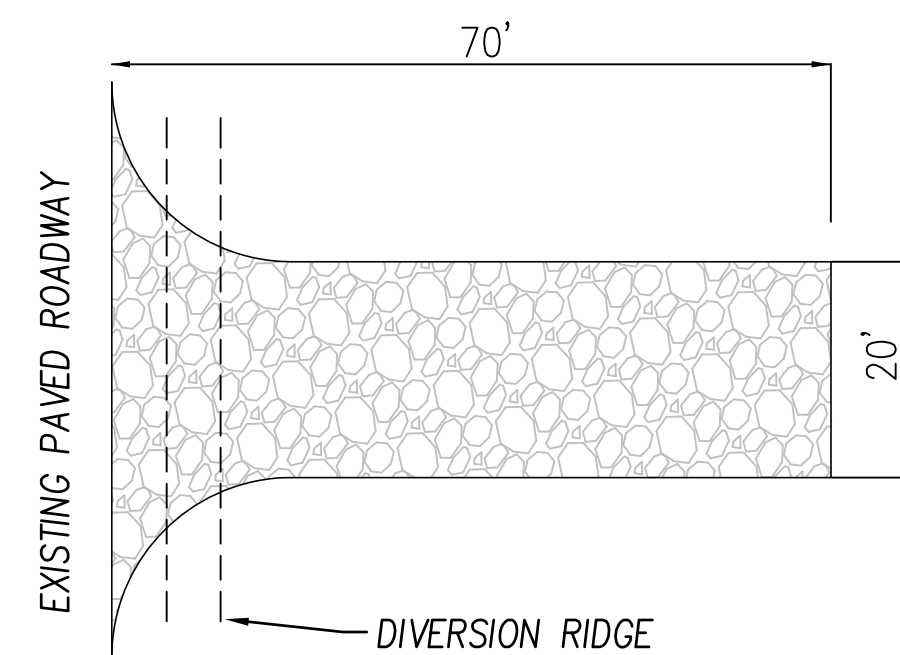
CONSTRUCTION: Excavate a 6" deep trench around the inlet, then drive the 2"x4" posts 6" below the excavated trench. Construct the wooden frame using the overlap joint detail shown above. The filter fabric shall be stretched around the wooden frame and securely fastened. The filter fabric shall overlap across one side of the inlet such that the ends of the filter fabric are not attached to the same post. Backfill and compact the excavated soil. Other devices may be used with the approval of the Engineer.

MAINTENANCE: The filter fabric shall be maintained to be functional. This shall include removal of trapped sediment and required cleaning, repair, and/or replacement of the filter fabric. The maintenance or replacement cost will be paid for by the Department under unit bid prices, agreed unit prices, or under 832.

PAYMENT: The cost of all materials, construction and removal shall be paid for under Item 832 - Temporary Inlet Protection Filter Fabric Fence, Linear Foot.



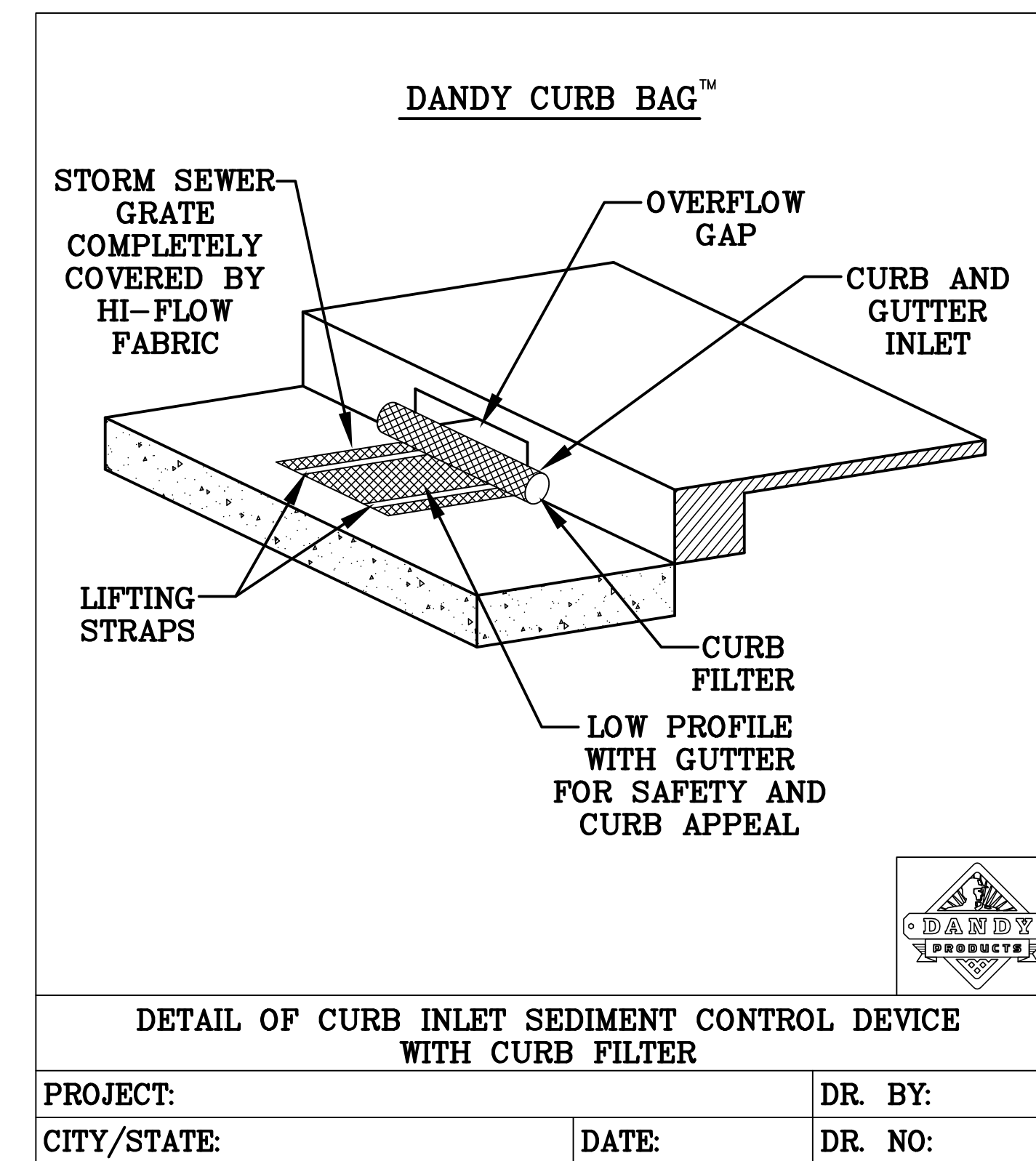
NOTE:
THE CONTRACTOR CAN USE PORTABLE CONCRETE WASHOUT AREAS IN LIEU OF CONCRETE WASHOUT BASINS (RECOMMENDED). WASHOUT AREAS SHALL HAVE 10 MIL PLASTIC LINING.



TYPICAL CONSTRUCTION ENTRANCE/EXIT DETAIL

SCALE = NTS

IF MUD MAT BECOMES CLOGGED WITH SEDIMENT SO THAT IT NO LONGER ADEQUATELY PERFORMS ITS FUNCTION, THE STONE MUST BE CLEANED AND REPLACED.
ALL EQUIPMENT LEAVING SITE MUST USE MUD MAT AND HAVE LOADS STABILIZED AND TIGHT WITH ALL LOOSE DEBRIS AND MATTER REMOVED PRIOR TO TRAVELING ON PUBLIC ROADWAYS.
ANY TRACK-OUT NOT CONTAINED BY THE MUD MAT MUST BE CLEANED UP BY THE CONTRACTOR IMMEDIATELY AFTER OCCURRENCE.



DETAIL OF CURB INLET SEDIMENT CONTROL DEVICE WITH CURB FILTER

PROJECT:	DR. BY:
CITY/STATE:	DATE:
	DR. NO:

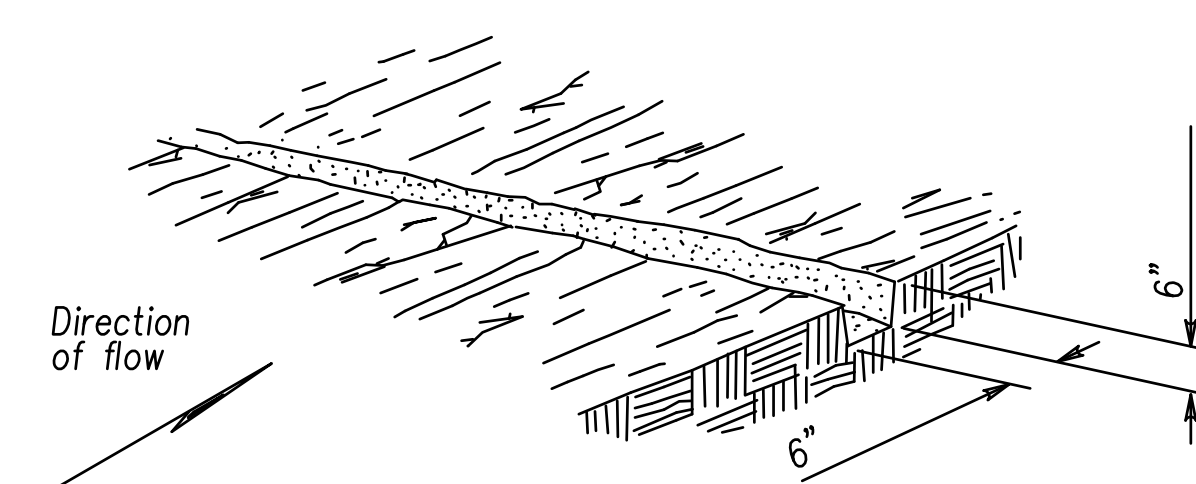
DANDY CURB BAG™
SPECIFICATIONS

NOTE: THE DANDY CURB BAG™ WILL BE MANUFACTURED IN THE U.S.A FROM A WOVEN MONOFILAMENT FABRIC THAT MEETS OR EXCEEDS THE FOLLOWING SPECIFICATIONS:

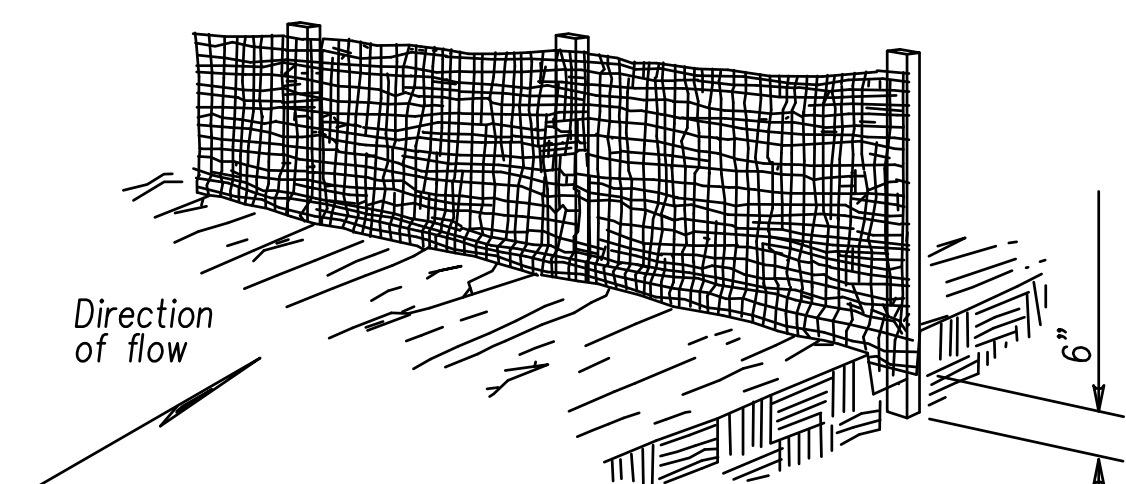
DANDY CURB BAG™ (SAFETY ORANGE)

Mechanical Properties	Test Method	Units	MARV
Grab Tensile Strength	ASTM D 4632	kN (lbs)	1.62 (365) X 0.89 (200)
Grab Tensile Elongation	ASTM D 4632	%	24 X 10
Puncture Strength	ASTM D 4833	kN (lbs)	0.40 (90)
Mullen Burst Strength	ASTM D 3786	kPa (psi)	3097 (450)
Trapezoid Tear Strength	ASTM D 4533	kN (lbs)	0.51 (115) X 0.33 (75)
UV Resistance	ASTM D 4355	%	90
Apparent Opening Size	ASTM D 4751	Mm (US Std Sieve)	0.425 (40)
Flow Rate	ASTM D 4491	1/min/m² (gal/min/ft²)	5907 (145)
Permittivity	ASTM D 4491	Sec ⁻¹	2.1

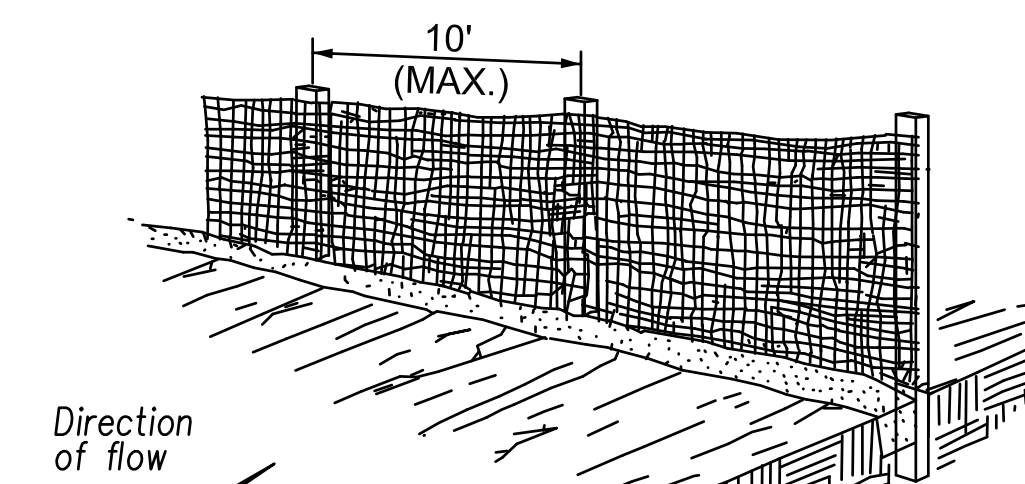
*Note: All Dandy Curb Bags™ can be ordered with our optional oil absorbents



STEP 1

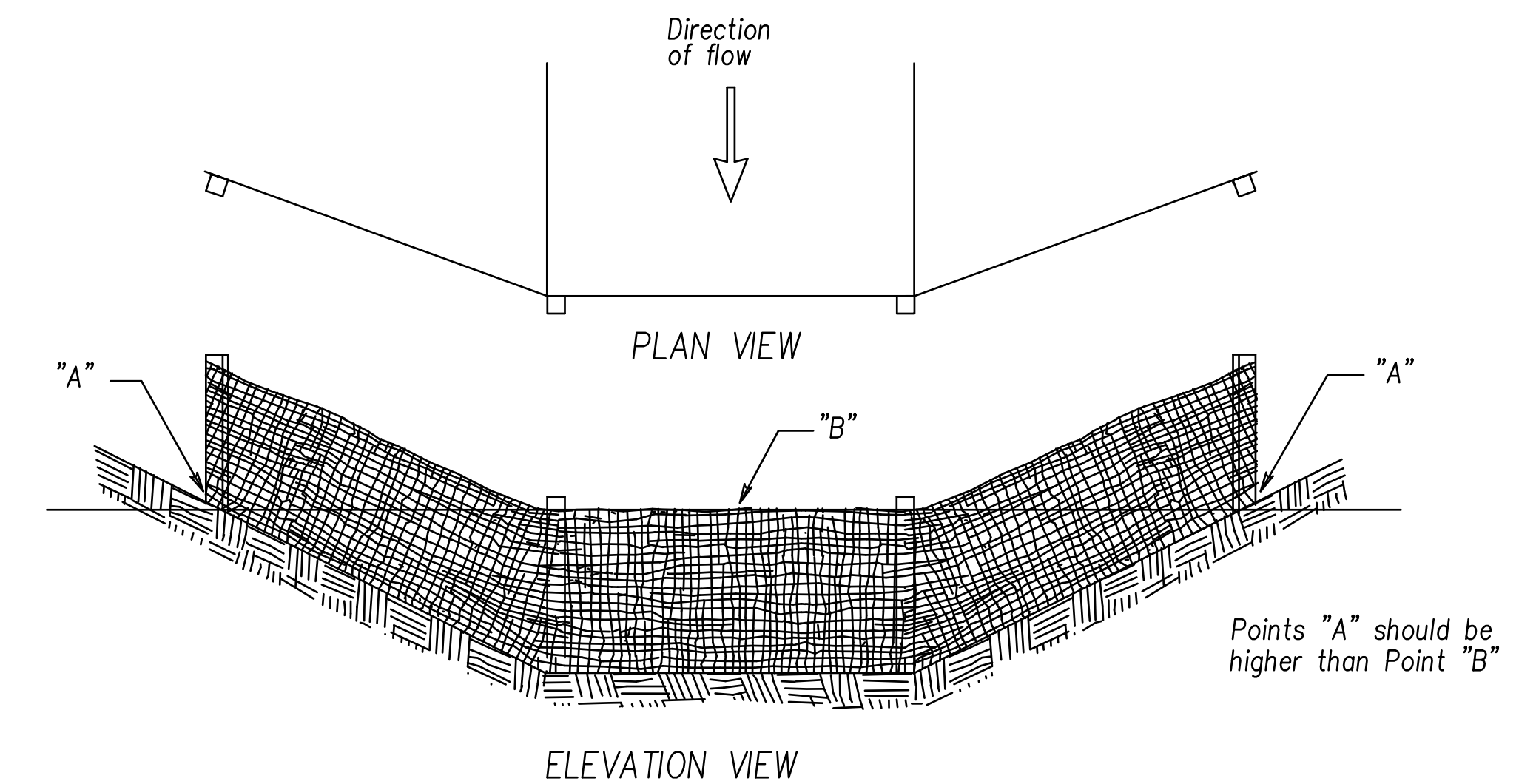


STEP 2



STEP 3

PLACEMENT AND CONSTRUCTION OF PERIMETER FILTER FABRIC FENCE



PLACEMENT AND CONSTRUCTION OF DITCH CHECK FILTER FABRIC FENCE