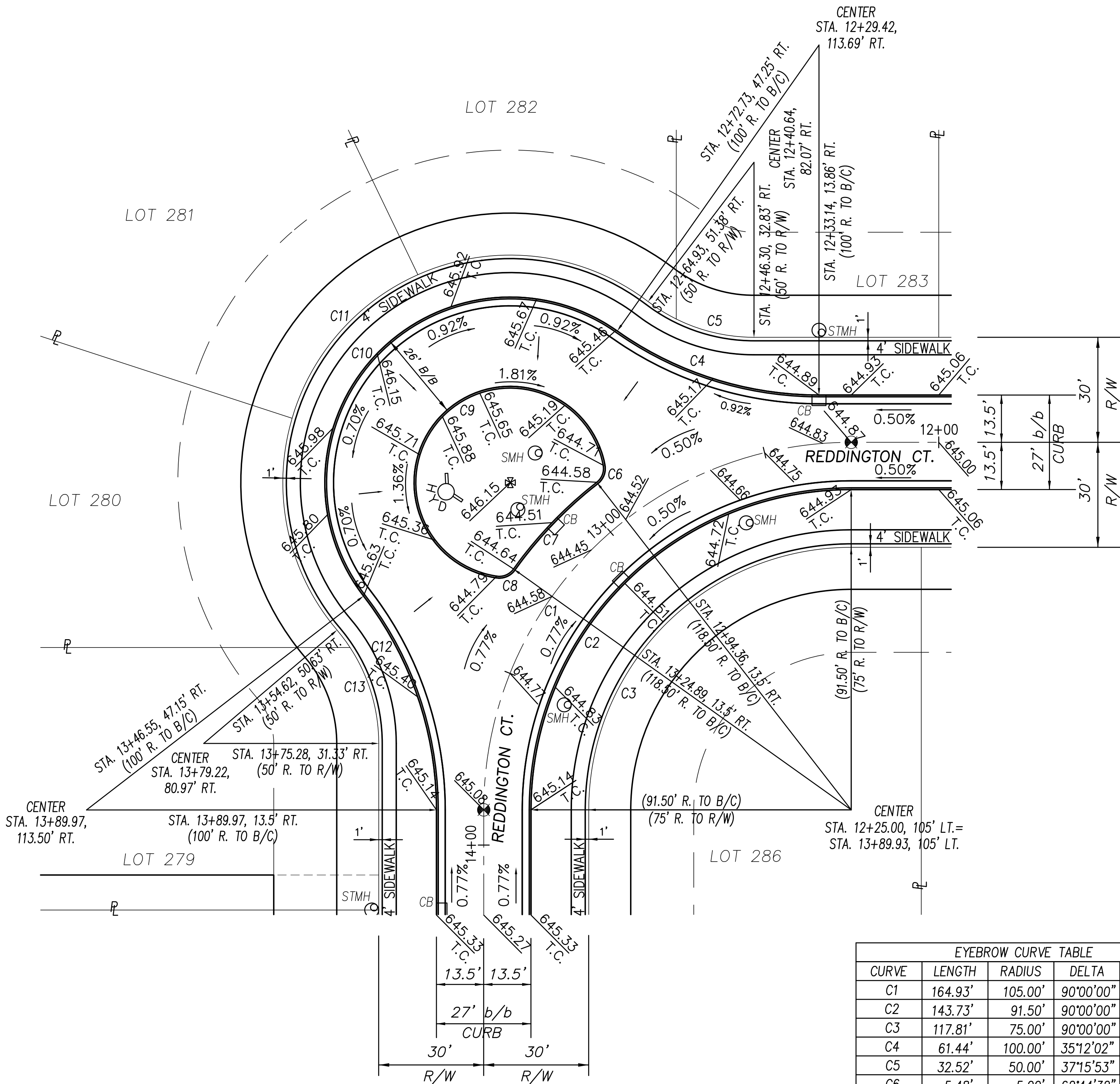


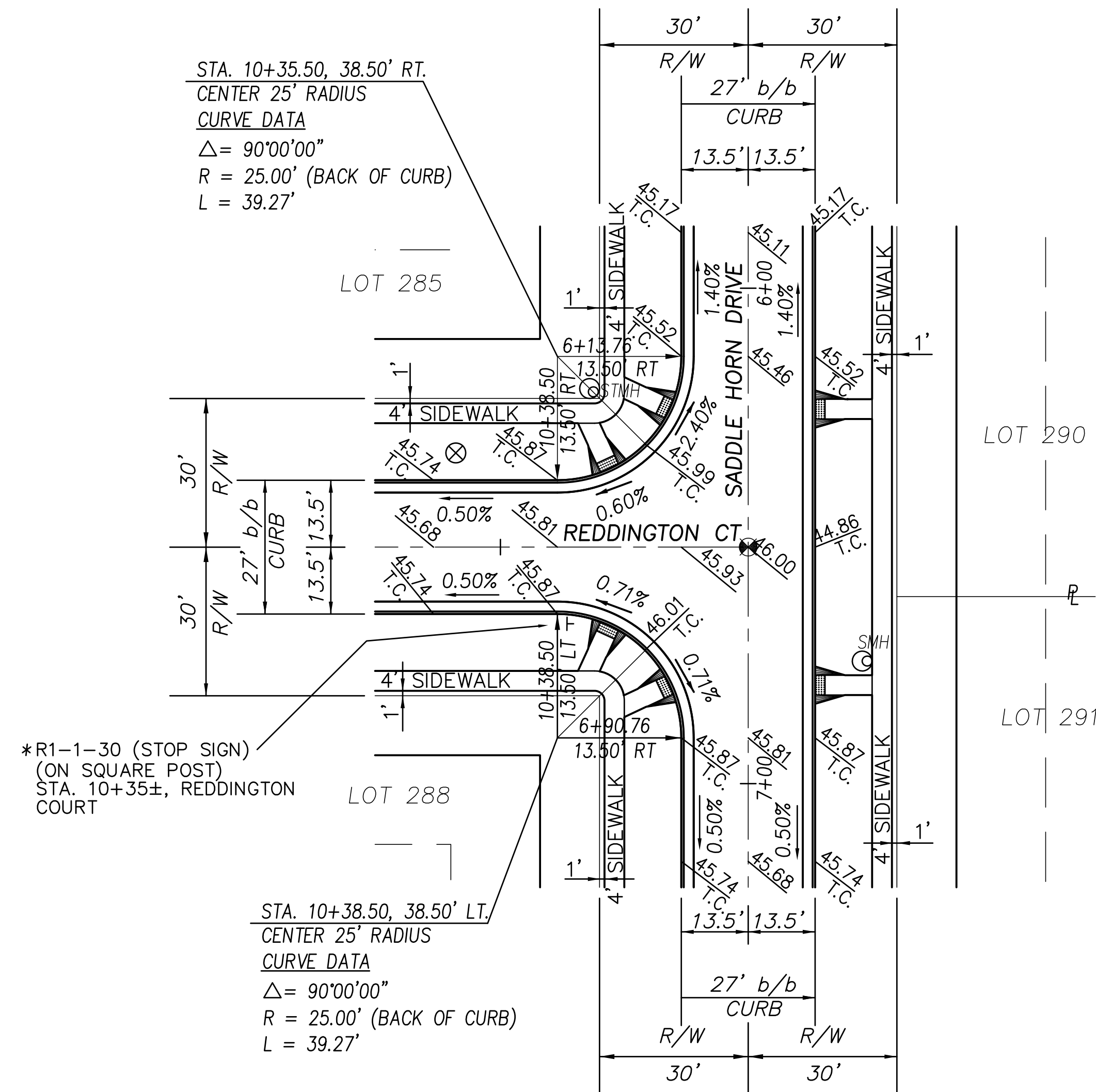
BENCH MARK DATA		BENCH MARK DATA	
NORTH BONNET BOLT ON FIRE HYDRANT		NORTH BONNET BOLT ON FIRE HYDRANT	
STA. 20+76.40, 19' RT, SADDLE HORN DRIVE	ELEVATION.....647.05	STA. 9+39.91, 59.13' LT, STONEBRIDGE LANE	ELEVATION.....644.87



REDDINGTON COURT - EYEBROW DETAIL

EYEBROW CURVE TABLE				
CURVE	LENGTH	RADIUS	DELTA	CHORD
C1	164.93'	105.00'	90°00'00"	148.49'
C2	143.73'	91.50'	90°00'00"	129.40'
C3	117.81'	75.00'	90°00'00"	106.07'
C4	61.44'	100.00'	35°12'02"	60.48'
C5	32.52'	50.00'	37°15'53"	31.95'
C6	5.48'	5.00'	62°44'32"	5.21'
C7	34.46'	118.50'	16°39'33"	34.33'
C8	5.48'	5.00'	62°44'32"	5.21'
C9	118.36'	27.00'	251°10'29"	---
C10	150.66'	53.00'	162°52'29"	104.82'
C11	190.19'	65.00'	167°38'51"	129.25'
C12	65.75'	100.00'	37°40'28"	64.58'
C13	35.24'	50.00'	40°22'59"	34.52'

STA. 6+52.26, SADDLE HORN DRIVE  
 STA. 10+00.00, REDDINGTON COURT  
 TYPE "B" MONUMENT



REDDINGTON COURT - SADDLE HORN DRIVE  
 INTERSECTION DETAIL

\* R1-1-30 (STOP SIGN)  
 (ON SQUARE POST)  
 STA. 10+35±, REDDINGTON  
 COURT

\* STREET NAME SIGNS AND STOP SIGNS SHALL BE PLACED BY THE  
 WOOD COUNTY ENGINEER. THE COST SHALL BE PAID BY THE  
 DEVELOPER.