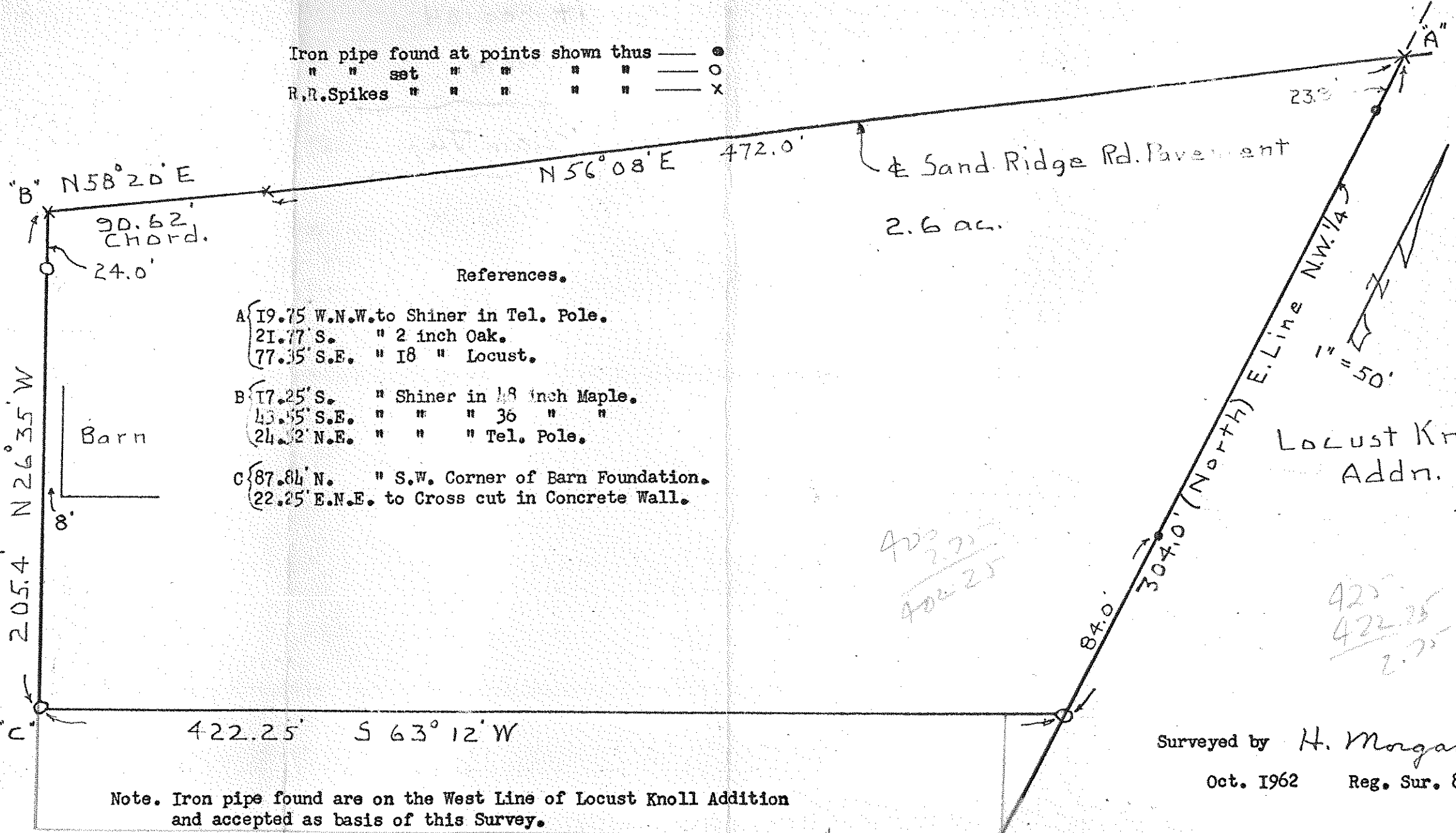


535
PLAIN

535
PLAIN

SURVEY
in
N.W. 1/4 of Sec. 34
Plain Twp. Wo. Co.
O.

Iron pipe found at points shown thus — ●
" " set " " " " — ○
R.R. Spikes " " " " " " — X



References.

- A { 19.75' W.N.W. to Shiner in Tel. Pole.
21.77' S. " 2 inch Oak.
77.35' S.E. " 18 " Locust.
- B { 17.25' S. " Shiner in 18 inch Maple.
43.55' S.E. " " " 36 " "
24.32' N.E. " " " Tel. Pole.
- C { 87.84' N. " S.W. Corner of Barn Foundation.
22.25' E.N.E. to Cross cut in Concrete Wall.

422.25
2.75
425

425
422.25
2.75

Surveyed by H. Morgan
Oct. 1962 Reg. Sur. 890

Note. Iron pipe found are on the West Line of Locust Knoll Addition and accepted as basis of this Survey.

402.25