

211
ROSSFORD

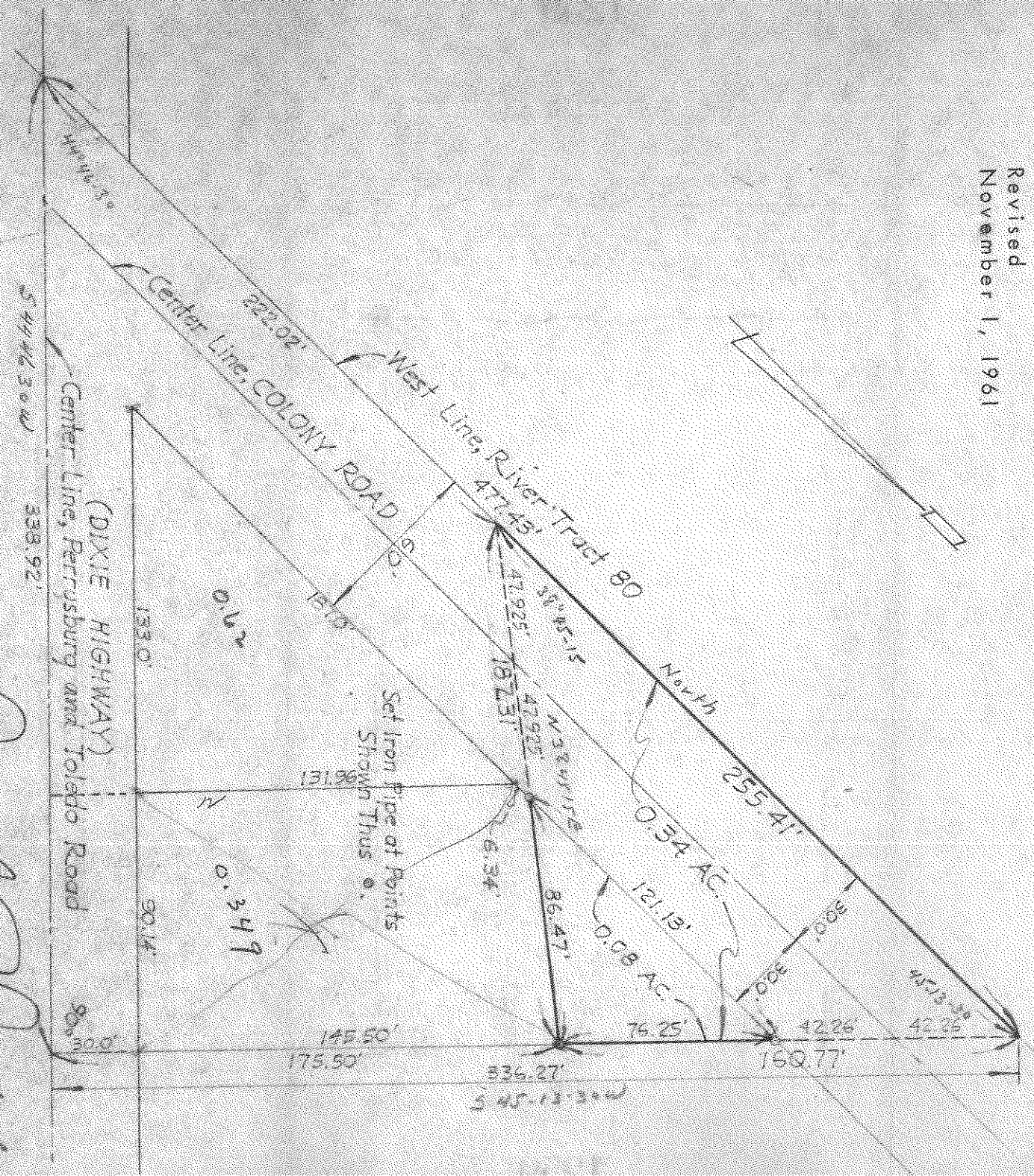
NATIONAL SURVEY SERVICE
CIVIL ENGINEERS SURVEYORS
330 ERIE STREET
TOLEDO 2, OHIO
CH-6-9522

PART OF RIVER TRACT 80

VILLAGE OF ROSSFORD WOOD COUNTY OHIO

DECEMBER 7, 1959 Scale: 1" = 50' ORDER 39336

Revised
November 1, 1961



By *Donald P. Dinkler*
Registered Surveyor

211
ROSSFORD