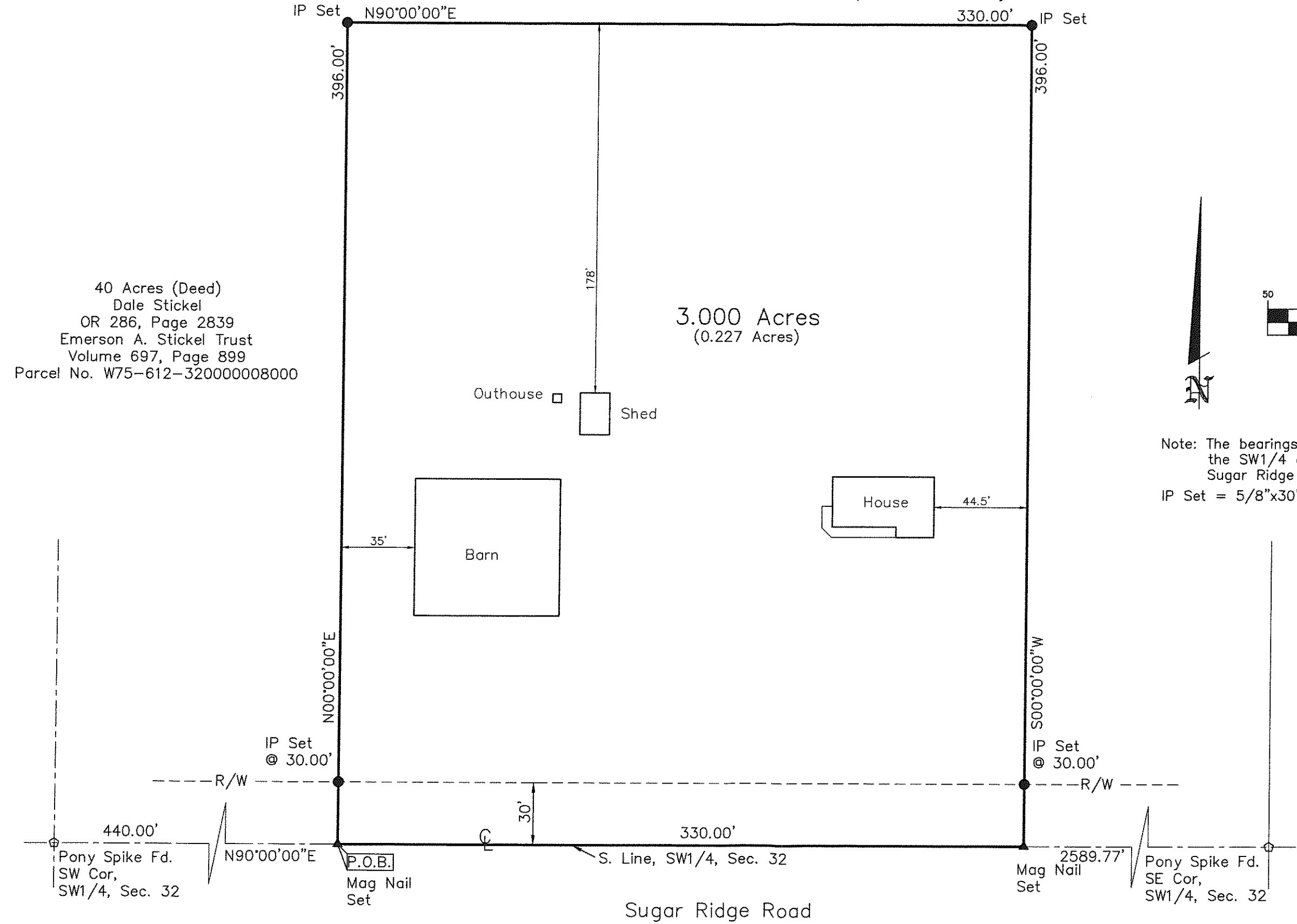


Webster
A
237

Survey For Stickel

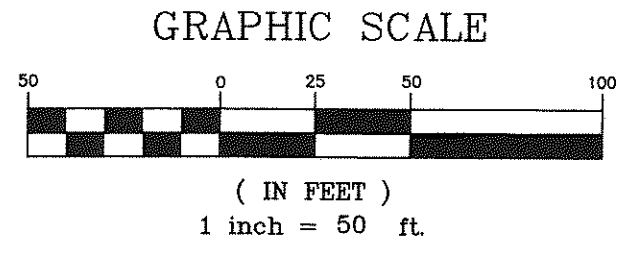
PAI Job #12-0623
Dwg. RKT

Being part of the SW1/4 of the SW1/4 of Section 32,
T6N, R12E, Webster Township, Wood County, Ohio



40 Acres (Deed)
Dale Stickel
OR 286, Page 2839
Emerson A. Stickel Trust
Volume 697, Page 899
Parcel No. W75-612-320000008000

3.000 Acres
(0.227 Acres)



Note: The bearings on this plat are based upon the south line
the SW1/4 of Section 32, also being the centerline of
Sugar Ridge Road bearing N90°00'00"E.
IP Set = 5/8"x30" rebar with Peterman Associates Cap.

Revised 9-27-2012
Date: 9-27-2012
Nick E. Nigh, P.S. #7384
Peterman Associates, Inc.
3480 N. Main Street
Findlay, Ohio 45840

PETERMAN ASSOCIATES, INC.

- ARCHITECTS - ENGINEERS - SURVEYORS -

Corporate Office
3480 N. Main Street
Findlay, Ohio 45840
Office (419) 422-8872
Fax (419) 422-8488

Webster
A
237